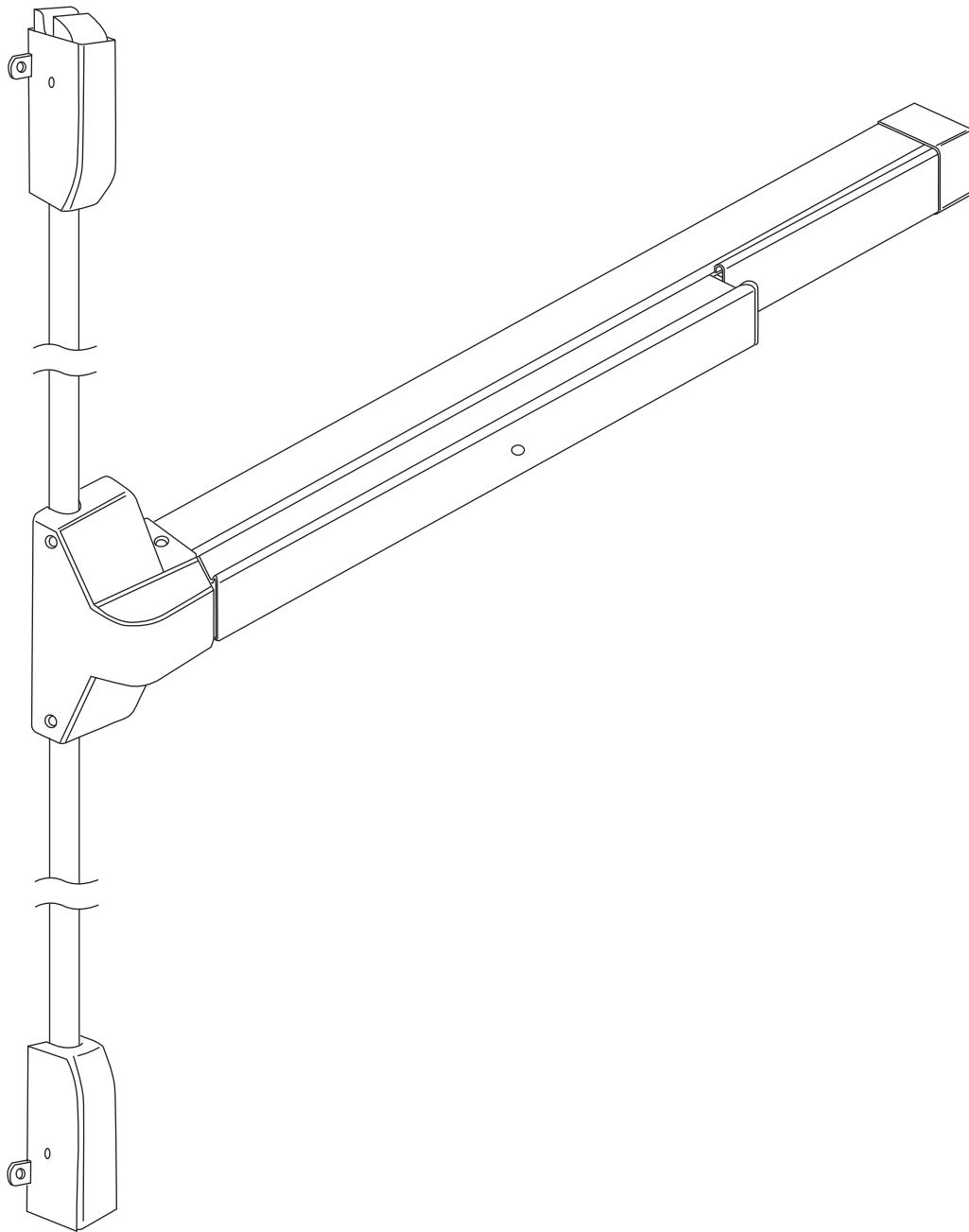


2000V Surface Vertical Rod Exit Device Installation Instructions



A INSTALLATION PROCEDURES:**STEP 1 : DIRECTIONS FOR CHANGING HANDING OF DEVICE**

Handing of device is preset at factory for RHR. To change handing of device, follow steps shown below and see DRAWING FOR STEP 1.

1. Loosen screw 'A' and remove screw 'B' and spring 'C'.
2. Reverse the positions of screw 'B' and spring 'C' and then tighten screw 'A'.
3. The device is now set for LHR.

STEP 2 : MARK CENTER LINE ON DOOR

Mark center line on inside of door. Establish the horizontal center line of the device by drawing a line across the door 40" above floor line.

STEP 3 : INSTALL CYLINDER

See DRAWING FOR STEP 3.
(Or, install other trims. See installation instructions of these outside trims. If not required, DO NOT DRILL CYLINDER HOLE, skip to STEP 4.)

STEP 4 : MARK DOOR AND DRILL HOLES

1. Fold and apply template (A) to edge of door and mark door as indicated on template (A).
2. Drill holes A X 6 in accordance with the diameters as indicated on template (A)

STEP 5 : INSTALL DEVICE BODY

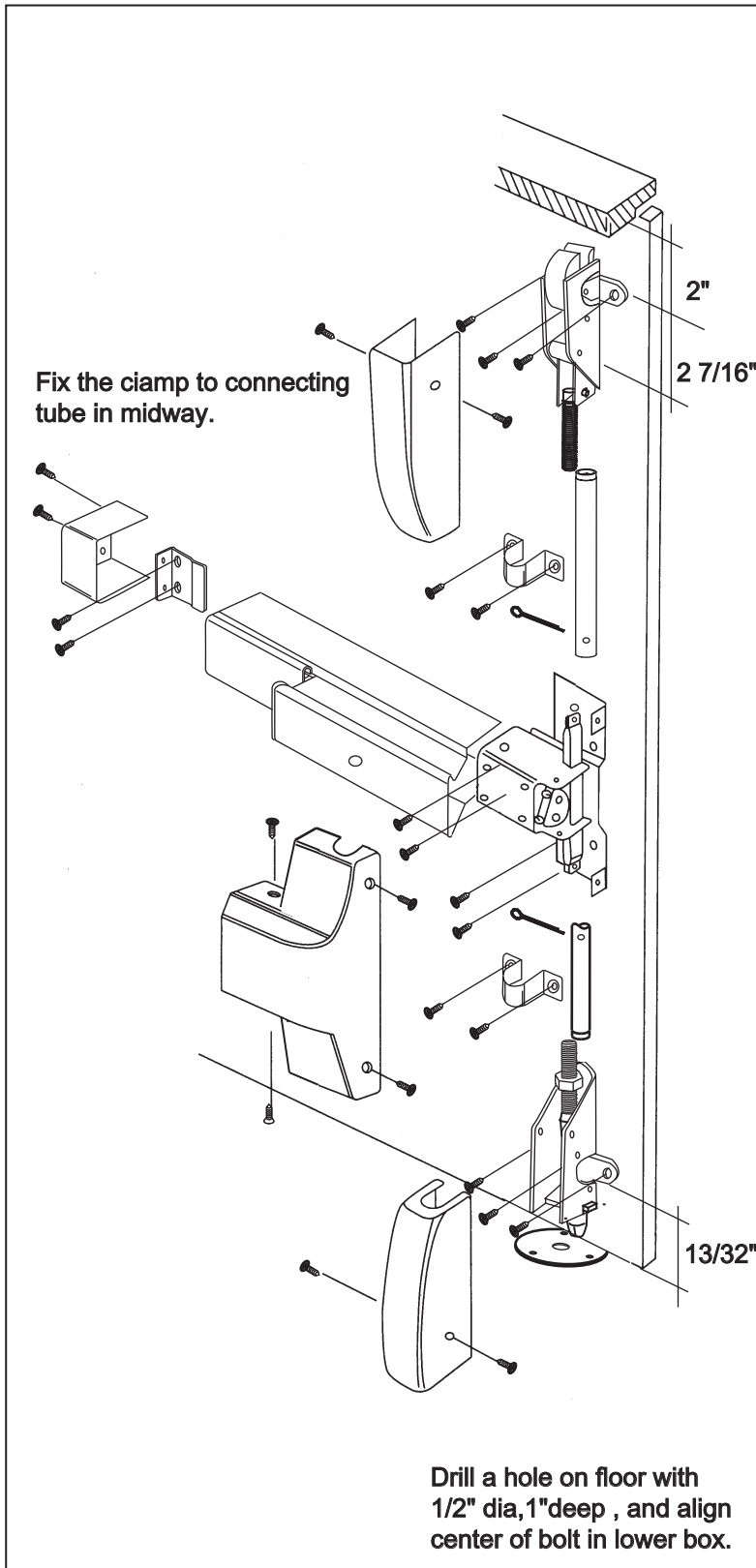
1. Remove the head cover from the device body and end cover from the mounting bracket by removing the screws that hold them on.
2. Align tailpiece receiver of exit device and trim/cylinder tailpiece, so it slides onto trim/cylinder tailpiece. Also align screw holes on exit device head with mounting holes on the door.
3. Install and tighten the mounting screws for the head of the exit device and end cover mounting bracket.

STEP 6 : INSTALL TOP STRIKE

1. Align vertical center line of top strike and top rod as shown on template (B-1). Mark door as indicated on template (B-1).
2. Install top strike with its mounting screws and adjust as needed.

STEP 7 : INSTALL TOP LATCH ASSEMBLY

1. Align vertical center line of top latch assembly and top rod as shown on template (B-1). Mark door as indicated on template (B-1).
CAUTION : BE SURE THE DISTANCE FROM DOOR FRAME TO LINE W MUST BE 2"
2. Tighten screws to install top latch assembly.



Not to scale 1:1. Measurements are for reference only. Not a drilling template.

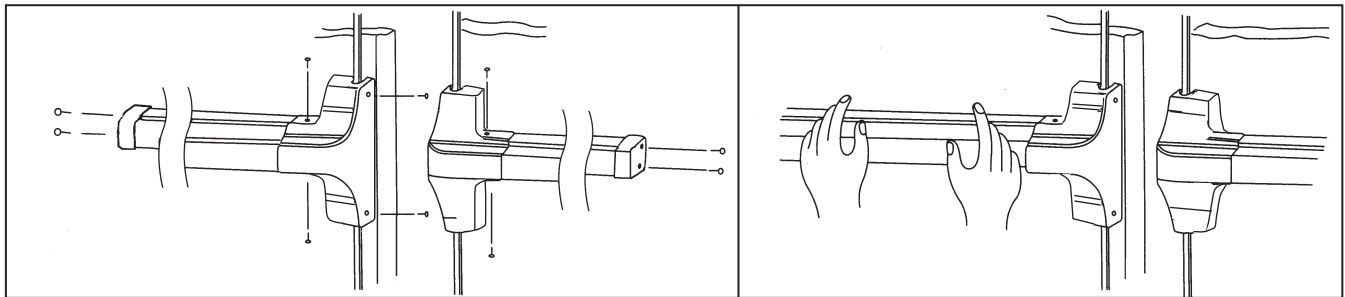
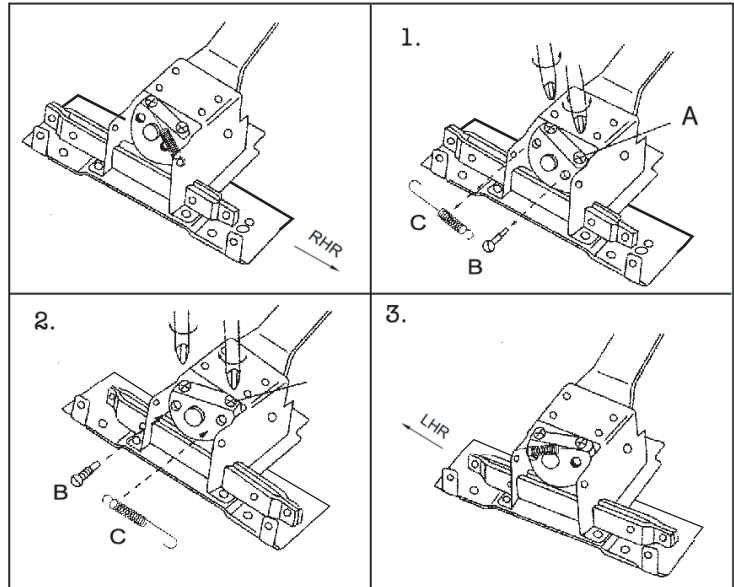
STEP 8 : INSTALL BOTTOM LATCH ASSEMBLY

- 1.Align vertical center line of bottom latch assembly and bottom rod as shown on template Mark door as indicated on template (B-2).
CAUTION : Be sure the distance from the bottom edge of door to the bottom latch base is 3/8".
- 2.Drill hole M, 1 7/32" from bottom edge of door.
- 3.Align bottom latch base with hole M, adjust it's location to have 3/8" between the bottom of the door and the bottom edge of the bottom latch base. Then tighten screw M.
- 4.Drill hole N, install bottom latch assembly into bottom latch base and tighten screw N.

STEP 9 : INSTALL AND ADJUST UPPER CONNECTING TUBE

- 1.Keep the end of the tube with the threaded insert upward to connect it with the threaded bolt in the top latch assembly.
- 2.Connect the other end of the tube to the internal mechanism of the head assembly by inserting the connecting pin into the holes.

DRAWING FOR STEP 1



- 3.Turn and adjust upper connecting tube until top latch assembly retracts properly and then fix the connecting pin by bending 2 ends.

- 2.The top and bottom latch assembly should disengage from the strikes freely when the actuating bar is depressed. If they do not disengage, adjust the bolt in the bottom latch assembly as needed and retest for proper operation.

STEP 10 : INSTALL AND ADJUST LOWER CONNECTING TUBE

- 1.Keep the end of the tube with the threaded insert downward to connect it with the threaded bolt in the bottom latch assembly.
- 2.Connect the other end of the tube to the internal mechanism of the head assembly by inserting the connecting pin into the holes.
- 3.Connect bolt in bottom latch assembly with lower connecting tube.
Then, depress actuating bar and adjust lower connecting tube until bottom latch assembly retracts properly.
Then, fix the connecting pin by bending 2 ends.
Do not let bolt in bottom latch assembly touch floor while depressing actuating bar.

STEP 13 : INSTALL TWO ROD GUIDES

- 1.Take the approximately middle of upper and lower connecting tube.
- 2.Tighten screws to install rod guides.

STEP 14 : INSTALL 4 COVERS

Install head cover, end cover, top latch cover, bottom latch cover and tighten screws.

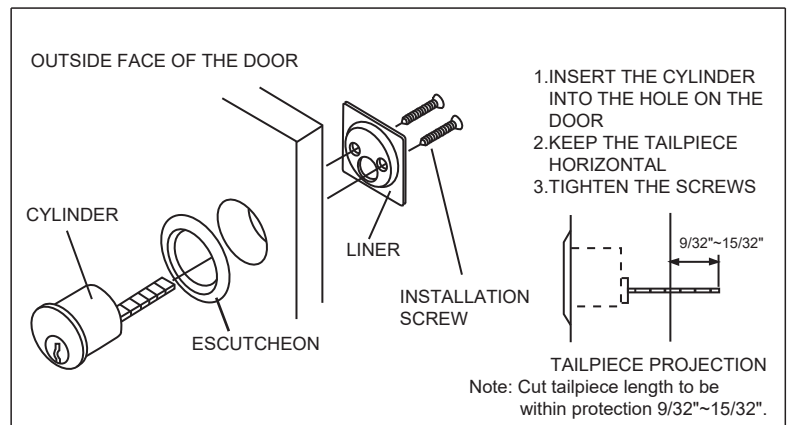
STEP 11 : INSTALL FLOOR STRIKE

- 1.Let the bolt in the lower bottom latch assembly touch the floor and mark on floor.
- 2.Drill a 5/8" dia, 1" deep hole.
- 3.Let the bolt in the lower bottom latch assembly insert into the center hole of floor strike and mark 3 anchor / screw holes on floor.
- 4.Drill 3 anchor / screw holes, 1/4" dia , 1 1/8" deep.
- 5.Hammer 3 anchors into 3 anchor / screw holes. Tighten up 3 screws.

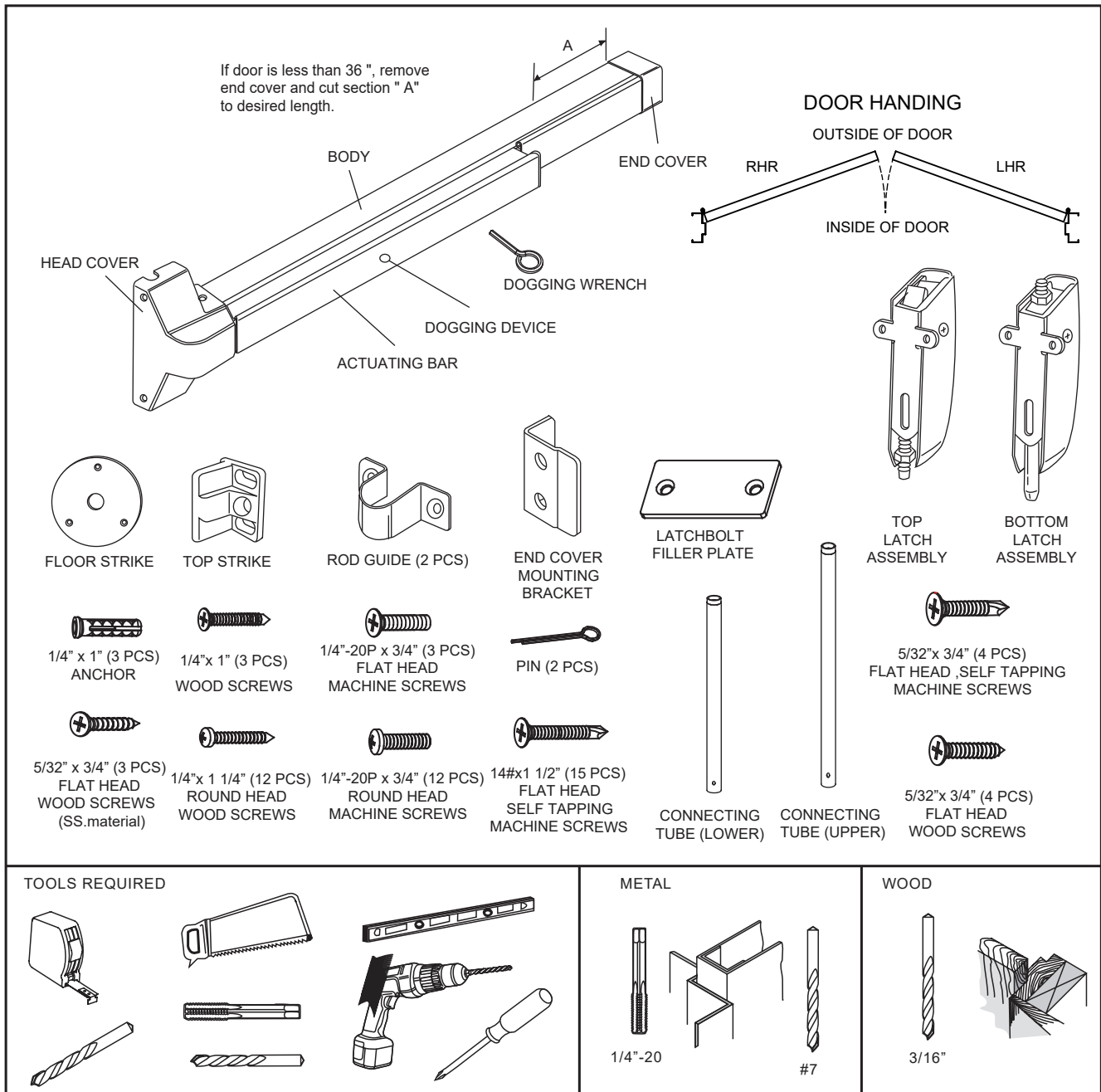
STEP 12 : TEST ACTUATING BAR AND DOGGING OPERATION

- 1.The top latch assembly should engage the top strike and the bottom latch assembly should engage the floor strike when the door is closed. If the door can be pushed open without depressing the actuating bar, the upper connecting tube has been over adjust.
Readjust it as needed.

DRAWING FOR STEP 3

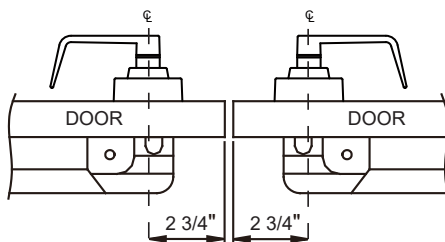


B IDENTIFICATION OF PARTS



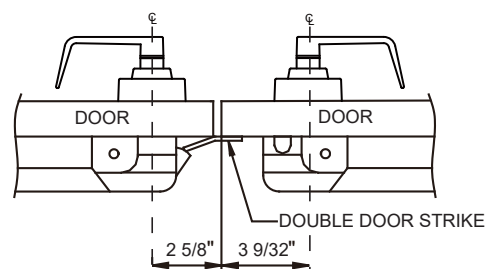
C TYPE OF INSTALLATION

A. Surface Vertical Rod x Surface Vertical Rod on a Pair of Doors



For complete template information
Please refer to Surface Vertical
Rod exit device template.

B. Rim w/ DDS x Surface Vertical Rod on a Pair of Doors



When installing Rim device x SVR device on a
pair of doors a Double Door Strike (DDS)
is required. For complete template information,
please refer to the DDS template.

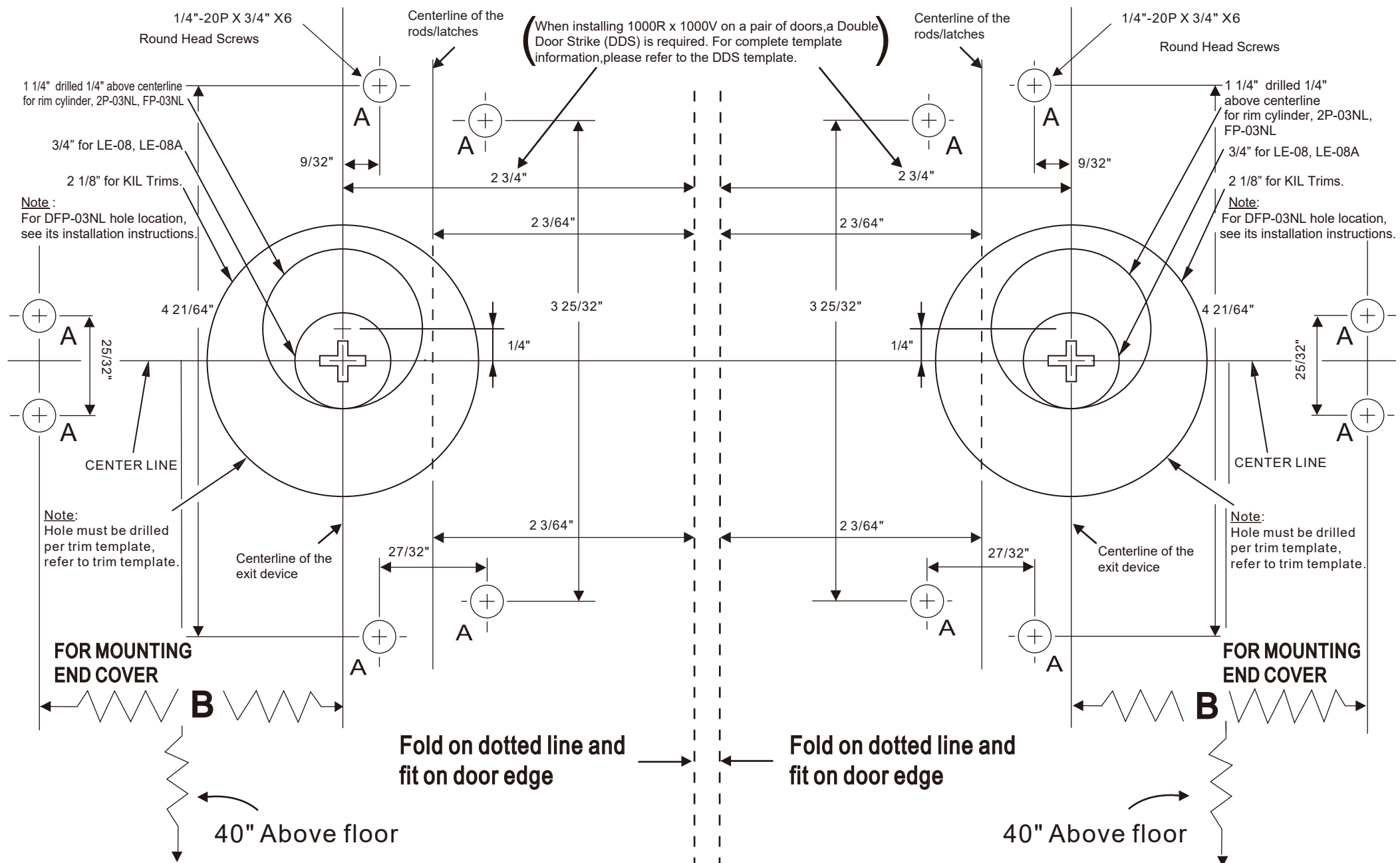
Not to scale 1:1. Measurements are for reference only. Not a drilling template.

(A) For 2000V series (UL Listed)-Drill & tap for (6) 1/4"x20P X3/4" machine screws for exit device
Drill (6) 3/16" pilot holes for self tapping machine screws or wood screws for exit device.

(B) For F2000V (Fire Rated)-Drill 9/32" holes inside and 3/8" holes outside for the (6) thru bolts.

FOR RIGHT HAND DOOR INSTALLATION

FOR LEFT HAND DOOR INSTALLATION



Template to scale 1 : 1, full size.

TEMPLATE (B-1)

(A) For 2000V series (UL Listed)-drill & tap for (3) 1/4"x20P X3/4" machine screws (2xD,E) for latches.
Drill (3) 3/16" pilot holes (2xD,E) for self-tapping machine screw or wood screws for latches.

(B) For F2000V (Fire Rated)-drill 9/32" holes (2xD,E) inside and 3/8" holes (2xD,E) outside for the (3) thru bolts.

F 1/4" - 20P x 3/4" x 1
FLAT HEAD MACHINE SCREW

CAUTION :

Drill " F " hole after latch bolt properly works

FOLD REVERSELY FOR
TOP STRIKE INSTALLATION

FRAME STOP

FOLD ON DOTTED LINE
AND FIT ON DOOR
FRAME

CAUTION:

BE SURE THE DISTANCE
FROM DOOR FRAME TO
LINE W MUST BE 2"

D 1/4" - 20P x 3/4" x 2
ROUND HEAD SCREW

DOOR EDGE

**TOP LATCH
ASSEMBLY**

DOOR EDGE

E 1/4" - 20P x 3/4"
ROUND HEAD SCREW

- Note : When installing top latch assembly
1. Drill (1) E hole and install screw but do not tighten all the way.
 2. Make sure distance from door frame to line W is 2".
 3. Drill (2) D holes and install and tighten screws.
 4. Tighten screw in hole E all the way.

Centerline of the
rods/latches

Template to scale 1 : 1, full size.

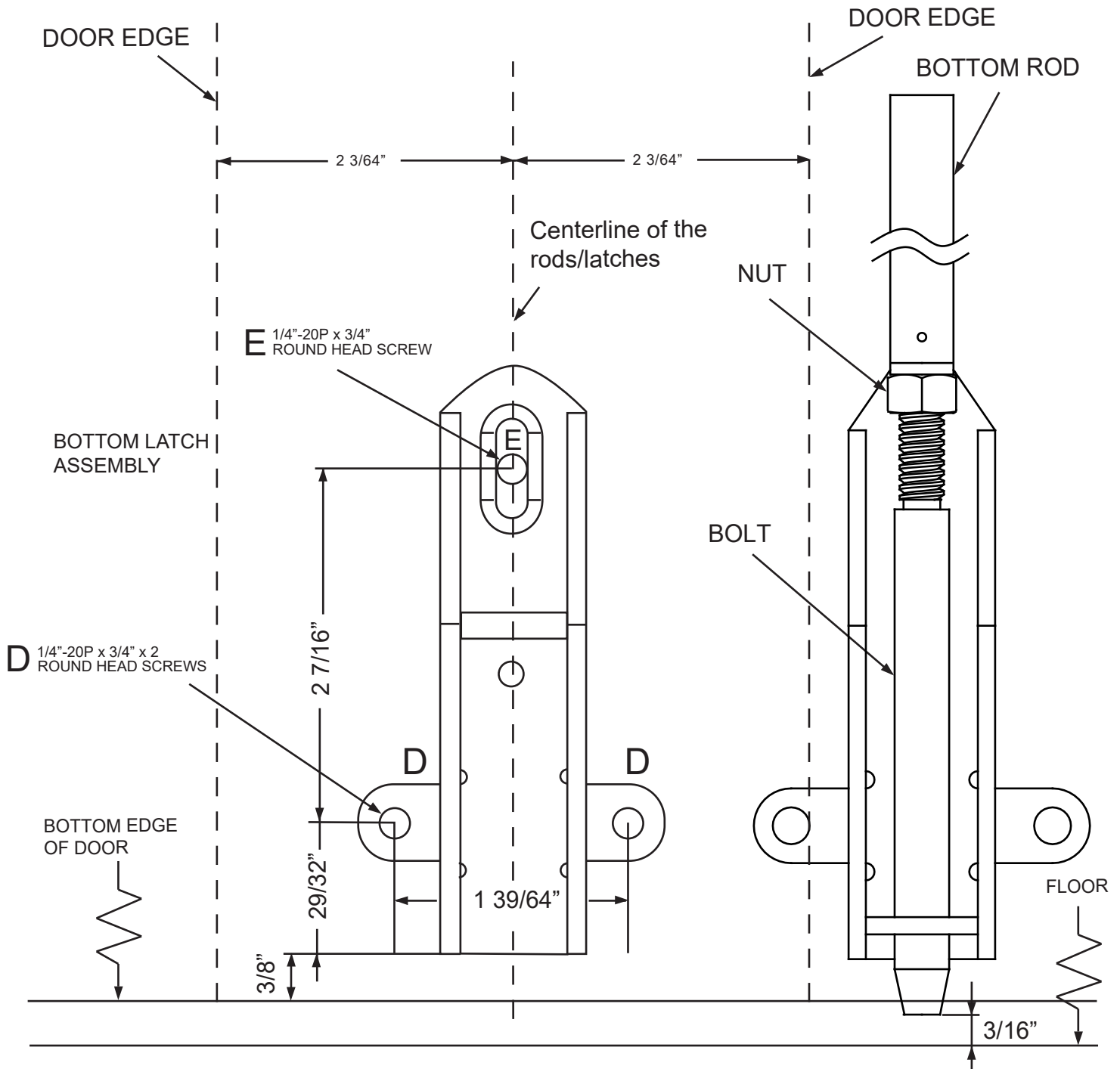
TEMPLATE (B-2)

(A) For 2000V Series (UL Listed)-Drill & tap for (3) 1/4"-20P x 3/4" machine screws (2xD,E) for latches.
Drill (3) 3/16" pilot holes (2xD,E) for self-tapping machine screws or wood screws for latches.

(B) For F2000V (Fire Rated)-Drill 9/32" holes (2xD,E) inside and 3/8" holes (2xD,E) outside for the (3) thru bolts.

Note : When installing top latch assembly :

1. Drill (1) E hole and install screw but do not tighten all the way.
2. Drill (2) D holes and install and tighten screws.
3. Tighten screw in hole E all the way.



Template to scale 1 : 1, full size.